

OFFICIAL REPUBLICAN PRIMARY BALLOT

A CITY OF GULFPORT B STATE OF MISSISSIPPI C MAY 5, 2009

INSTRUCTIONS TO VOTER:

- 1. TO VOTE YOU MUST BLACKEN THE OVAL (●) TO THE LEFT OF YOUR CHOICE COMPLETELY.
- 2. DO NOT USE RED INK. Use only Blue or Black Ink to mark your ballot.
- 3. DO NOT CROSS OUT OR ERASE - If you change your mind, exchange your ballot for a new one.
- 4. AFTER VOTING - Insert your ballot in the ballot sleeve, allowing the initials on the bottom of ballot to be seen.
- 5. DO NOT FOLD THE BALLOT.

MAYOR
VOTE FOR ONE

- GEORGE SCHLOEGEL
- JOE SPRAGGINS
- _____

Write-in

SAMPLE

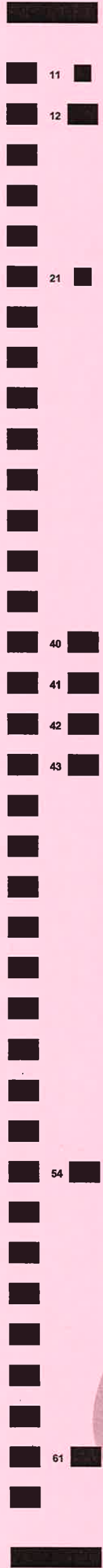
Official Ballot
Republican Primary Election
City of Gulfport
May 5, 2009
WARD 1 PRECINCT A (1A)

A WARD 1 PRECINCT A (1A) B Typ:02 Seq:0001 Spl:01 C

INITIALS

OFFICIAL REPUBLICAN PRIMARY BALLOT

A	CITY OF GULFPORT	B	STATE OF MISSISSIPPI	C	MAY 5, 2009
<p>INSTRUCTIONS TO VOTER:</p> <p>1. TO VOTE YOU MUST BLACKEN THE OVAL (●) TO THE LEFT OF YOUR CHOICE COMPLETELY.</p> <p>2. DO NOT USE RED INK. Use only Blue or Black Ink to mark your ballot.</p> <p>3. DO NOT CROSS OUT OR ERASE - If you change your mind, exchange your ballot for a new one.</p> <p>4. AFTER VOTING - Insert your ballot in the ballot sleeve, allowing the initials on the bottom of ballot to be seen.</p> <p>5. DO NOT FOLD THE BALLOT.</p>					
<p>MAYOR VOTE FOR ONE</p> <p><input type="radio"/> GEORGE SCHLOEGEL</p> <p><input type="radio"/> JOE SPRAGGINS</p> <p><input type="radio"/> _____</p>					
<p style="text-align: center;">Write-in</p>					
<p style="text-align: center;">Official Ballot Republican Primary Election City of Gulfport May 5, 2009 WARD 2 PRECINCT A (2A)</p>					
A	WARD 2 PRECINCT A (2A)	B	Typ:02 Seq:0004 Spl:01	C	



INITIALS

OFFICIAL REPUBLICAN PRIMARY BALLOT

A CITY OF GULFPORT B STATE OF MISSISSIPPI C MAY 5, 2009

INSTRUCTIONS TO VOTER:

1. TO VOTE YOU MUST BLACKEN THE OVAL (●) TO THE LEFT OF YOUR CHOICE COMPLETELY.
2. DO NOT USE RED INK. Use only Blue or Black Ink to mark your ballot.
3. DO NOT CROSS OUT OR ERASE - If you change your mind, exchange your ballot for a new one.
4. AFTER VOTING - Insert your ballot in the ballot sleeve, allowing the initials on the bottom of ballot to be seen.
5. DO NOT FOLD THE BALLOT.

MAYOR VOTE FOR ONE

GEORGE SCHLOEGEL

JOE SPRAGGINS

Write-in

A WARD 3 PRECINCT A (3A) B Typ:02 Seq:0006 Spl:01 C

Official Ballot
Republican Primary Election
City of Gulfport
May 5, 2009
WARD 3 PRECINCT A (3A)

INITIALS

OFFICIAL REPUBLICAN PRIMARY BALLOT

A CITY OF GULFPORT B STATE OF MISSISSIPPI C MAY 5, 2009

INSTRUCTIONS TO VOTER:

- 1. TO VOTE YOU MUST BLACKEN THE OVAL (●) TO THE LEFT OF YOUR CHOICE COMPLETELY.
- 2. DO NOT USE RED INK. Use only Blue or Black Ink to mark your ballot.
- 3. DO NOT CROSS OUT OR ERASE - If you change your mind, exchange your ballot for a new one.
- 4. AFTER VOTING - Insert your ballot in the ballot sleeve, allowing the initials on the bottom of ballot to be seen.
- 5. DO NOT FOLD THE BALLOT.

MAYOR
VOTE FOR ONE

- GEORGE SCHLOEGEL
- JOE SPRAGGINS
- _____

Write-in

COUNCIL
WARD 4
VOTE FOR ONE

- DICK CHAPIN
- F.B. "RUSTY" WALKER, IV
- _____

Write-in

Official Ballot
 Republican Primary Election
 City of Gulfport
 May 5, 2009
 WARD 4 PRECINCT A (4A)

A WARD 4 PRECINCT A (4A) B Typ:02 Seq:0010 Spl:01 C

INITIALS

OFFICIAL REPUBLICAN PRIMARY BALLOT

A CITY OF GULFPORT B STATE OF MISSISSIPPI C MAY 5, 2009

INSTRUCTIONS TO VOTER:

- 1. TO VOTE YOU MUST BLACKEN THE OVAL (●) TO THE LEFT OF YOUR CHOICE COMPLETELY.
- 2. DO NOT USE RED INK. Use only Blue or Black Ink to mark your ballot.
- 3. DO NOT CROSS OUT OR ERASE - If you change your mind, exchange your ballot for a new one.
- 4. AFTER VOTING - Insert your ballot in the ballot sleeve, allowing the initials on the bottom of ballot to be seen.
- 5. DO NOT FOLD THE BALLOT.

MAYOR
VOTE FOR ONE

- GEORGE SCHLOEGEL
- JOE SPRAGGINS
- _____
Write-in

COUNCIL
WARD 5
VOTE FOR ONE

- CONNOR BROWN
- BRIAN A. CARRIERE
- RICKY DOMBROWSKI
- _____
Write-in

Official Ballot
 Republican Primary Election
 City of Gulfport
 May 5, 2009
 WARD 5 PRECINCT A (5A)

A WARD 5 PRECINCT A (5A) B Typ:02 Seq:0012 Spl:01 C

INITIALS

OFFICIAL REPUBLICAN PRIMARY BALLOT

A CITY OF GULFPORT B STATE OF MISSISSIPPI C MAY 5, 2009

INSTRUCTIONS TO VOTER:

- 1. TO VOTE YOU MUST BLACKEN THE OVAL (●) TO THE LEFT OF YOUR CHOICE COMPLETELY.
- 2. DO NOT USE RED INK. Use only Blue or Black Ink to mark your ballot.
- 3. DO NOT CROSS OUT OR ERASE - If you change your mind, exchange your ballot for a new one.
- 4. AFTER VOTING - Insert your ballot in the ballot sleeve, allowing the initials on the bottom of ballot to be seen.
- 5. DO NOT FOLD THE BALLOT.

MAYOR
VOTE FOR ONE

- GEORGE SCHLOEGEL
- JOE SPRAGGINS
- _____
Write-in

COUNCIL
WARD 6
VOTE FOR ONE

- ROBERT "R. LEE" FLOWERS
- PHILLIP D. R. MABIE
- JEFF POWELL
- NEIL RESH
- _____
Write-in

Official Ballot
 Republican Primary Election
 City of Gulfport
 May 5, 2009
 WARD 6 PRECINCT A (6A)

A WARD 6 PRECINCT A (6A) B Typ:02 Seq:0014 Spl:01 C

INITIALS

OFFICIAL REPUBLICAN PRIMARY BALLOT

A	CITY OF GULFPORT	B	STATE OF MISSISSIPPI	C	MAY 5, 2009
INSTRUCTIONS TO VOTER: 1. TO VOTE YOU MUST BLACKEN THE OVAL (●) TO THE LEFT OF YOUR CHOICE COMPLETELY. 2. DO NOT USE RED INK. Use only Blue or Black Ink to mark your ballot. 3. DO NOT CROSS OUT OR ERASE - If you change your mind, exchange your ballot for a new one. 4. AFTER VOTING - Insert your ballot in the ballot sleeve, allowing the initials on the bottom of ballot to be seen. 5. DO NOT FOLD THE BALLOT.					
MAYOR VOTE FOR ONE <input type="radio"/> GEORGE SCHLOEGEL <input type="radio"/> JOE SPRAGGINS <input type="radio"/> _____ Write-in					
COUNCIL WARD 7 VOTE FOR ONE <input type="radio"/> TOMMY BALLARD <input type="radio"/> CARLTON R. HARMON, II (BEAU) <input type="radio"/> JOHN MCCAY, JR. <input type="radio"/> BARBARA NALLEY <input type="radio"/> CARA LERO PUCHEU <input type="radio"/> _____ Write-in					
<p style="text-align: center;">Official Ballot Republican Primary Election City of Gulfport May 5, 2009 WARD 7 PRECINCT A (7A)</p>					
A	WARD 7 PRECINCT A (7A)	B	Typ:02 Seq:0017 Spl:01	C	

11
12
21
40
41
42
47
51
61

INITIALS